

# RAINWATER FILTRATION



## High Efficiency Filters

TC Filters are the ideal solution for filtration of rainwater. As the filter can be backwashed indefinitely and never needs replacing, it is ideally suited for use in a recycling system aimed at preserving resources.

There are no throw away cartridges or bags, and the automatic filter uses such a small amount of power that it can be powered by a small solar panel if needed.



The TC Filters units have been used on many rainwater recycling systems, on a variety of applications. Large commercial buildings, as above, large industrial complexes, and many supermarkets are now using these unique filters in their recycling systems.

Rainwater can be used to flush toilets, wash cars, and many other applications, and is naturally soft so can save a lot in hard water areas.

The EasyClean filter is a small, simple and inexpensive unit, which can be incorporated into new or existing plant and can be manually backwashed if the automatic option is not required.

Larger systems can be put together in a modular format to allow for higher flows or a finer filtration requirement. TC Filters can put together complete systems with pumps, filtration and disinfection if required, or can supply just the individual filters as needed.



### Materials of construction:-

Filter coil	stainless steel
Filter cage	glass filled polypropylene*
Or	stainless steel
Housing	stainless steel or plastic
Valve	polypropylene or stainless steel
Valve seals	EPDM, or Viton or Nitrile

### Other Material :-

Support brackets	stainless steel
Pump	stainless steel wetted parts

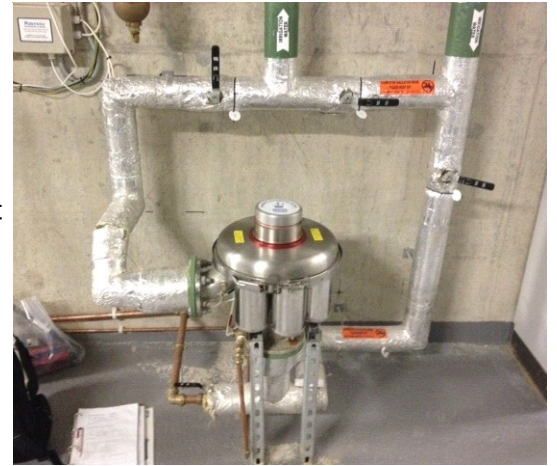
### Operating Parameters :-

Maximum pressure	up to 10 bar*
Maximum temperature	up to 95°C
Maximum flow	unlimited
Power supply	100-250Vac 2,3A max 12Vdc or 24Vdc

\*Other materials available for higher pressures and higher temperatures.

Some working filters on rainwater.

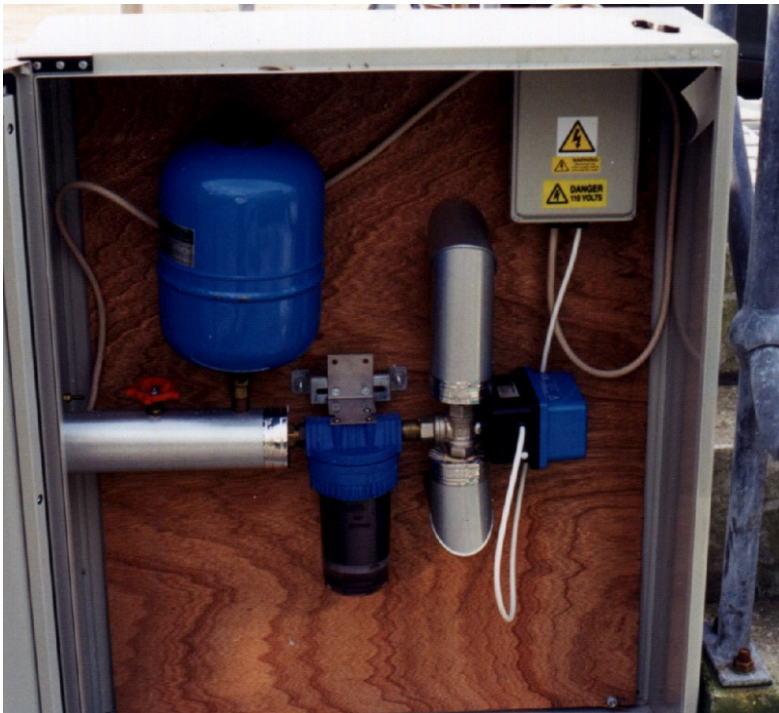
On the right is a single Phoenix unit, with its own controls, which is operating on a large rainwater system in London. The water is re-used for irrigation as well as toilet flushing. The complete and rapid self cleaning process of the Phoenix made this very attractive to the end user, who leaves the unit to operate completely independently and reliably throughout the year. On rainwater, the Phoenix needs no more than an annual inspection which can take under ten minutes. Many systems operate without any intervention for many years.



Made in stainless steel, with some plastic parts, the Phoenix filter has a very long lifespan, and early units have been in non stop operation for over fifteen years.

Below left is an EasyClean Automatic unit, built into a cabinet as part of a much larger system including UV disinfection for toilet flushing.

The unit on the right is a complete pump, filter and disinfection system built to take rainwater run-off and clean it to be used for a washdown process. The water had to remain free of bacteria as well as particulate, in order to prevent blockages in small nozzles. This system is installed in a major UK airport and saves the user money in mains water, as well as diesel fuel, as they no longer have to drive across the airport to fill up with mains water. The system is fully automated, with a self diagnosing UV unit, and PLC control monitoring the pumps, filters and UV unit.



**TC Filters**

Bath  
England

Tel : 07512 897900  
E-mail : sales@tcfilters.co.uk  
Website : www.tcfilters.co.uk

The design of TC Filters is subject to modification or change without notice

Distributed by:

