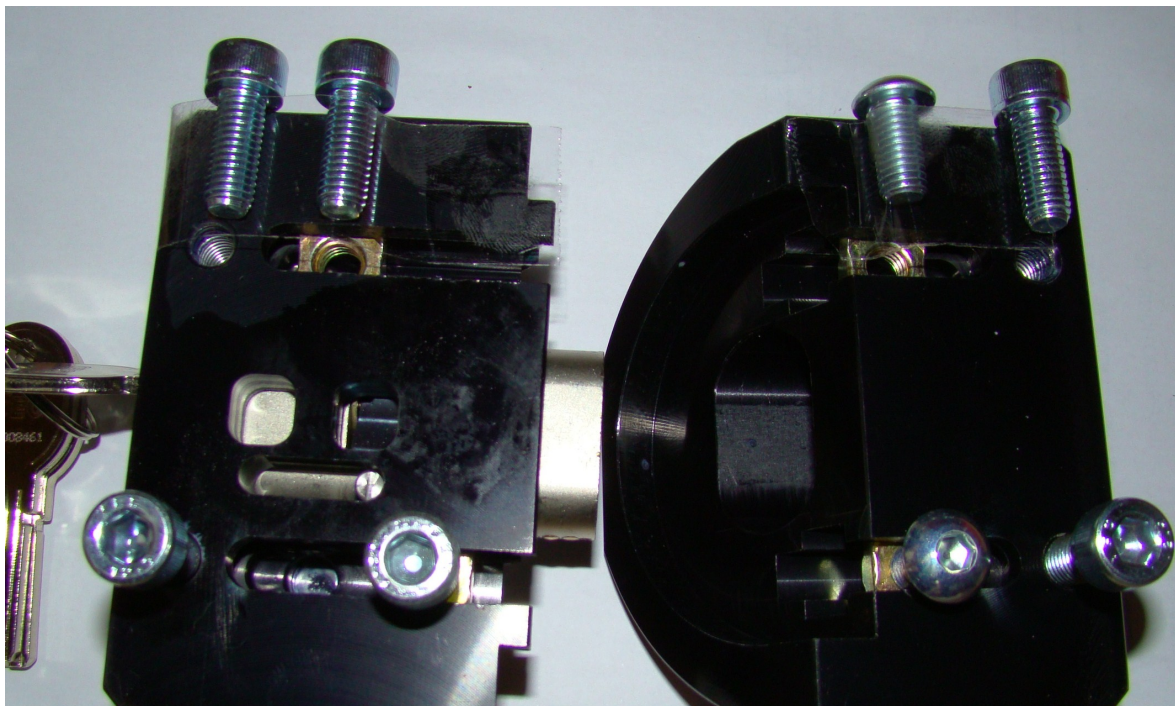


# Ford Transit Moal Side Door Fitting Instructions

This is a guide for the fitting of a moal lock on the side door of a ford transit  
**NB: Make sure the doors open and close correctly before fitting. All holes drilled should be deburred and treated with paint to manufacturers recommendations.**



**Kit should contain: 6 Cap Bolts, 2 Mushroom Bolts, 4 Shake Proof Nuts, 6 Large Washers, 2 Small Washers, 8 Shake Proof Washers, 6 Gromits, 2 Gaskets, 1 Moal Lock and 1 Set Of Keys**



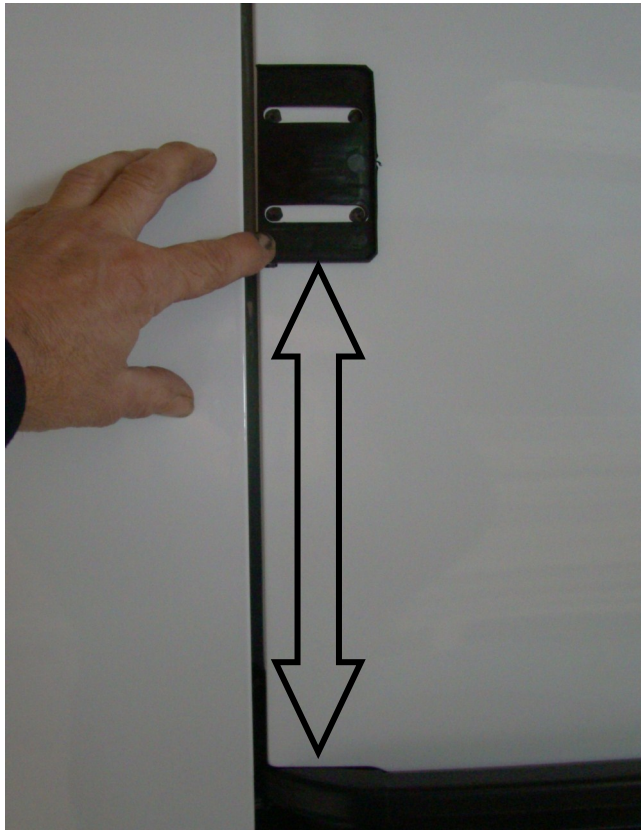
**This picture shows the types of bolts and nuts used and their position on the side door moal**

# Ford Transit Moal Side Door Fitting Instructions

Before commencing, pull the cable to one side in the side door pillar, as well as this remove pillar trim as not to chafe when drilling.



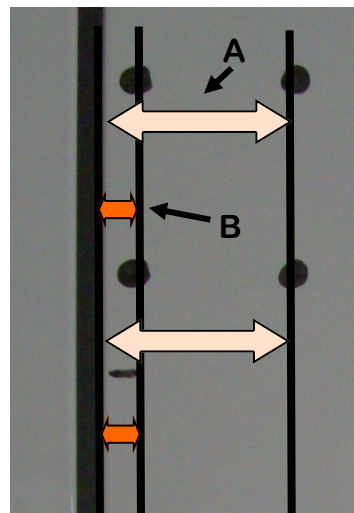
On the body panel, place the gasket 9.84 inches (250mm) up from the door runner (shown by the arrow) and draw two circles at either end of the gasket, these are the drill holes.



The outer holes should be 2.08 inches (53mm) (Arrow A) away from the edge of the door.

The inner hole (Arrow B) should be 0.59 inches (15mm) away from the edge of the door.

Once checked, drill pilot hole and then the M8 hole.



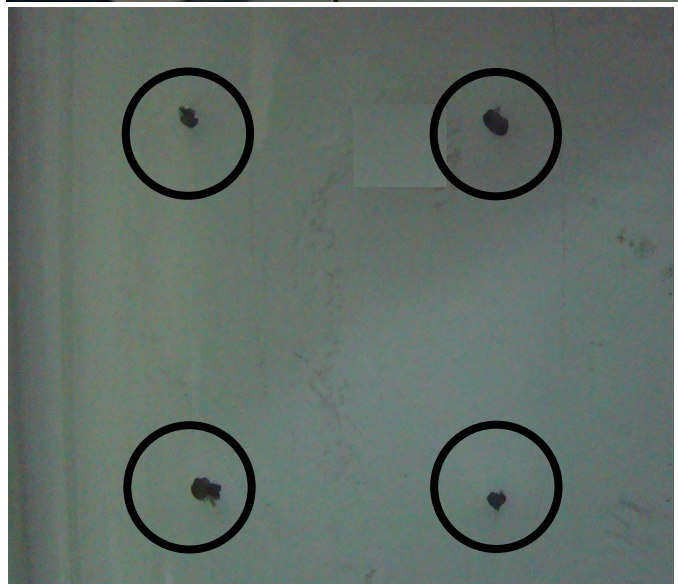
**The above instructions are designed for trade use only, measurements and specifications are to be used as a guide only, check for new vehicle specification I.E. Body Mouldings ETC. If in doubt contact helpline. Locks should be lubricated regularly, No Liability Is Accepted For Incorrectly Fitted Locks.**

# Ford Transit Moal Side Door Fitting Instructions

Using a punch, pass through the four external holes on the vehicle body (not the door) to mark the positions on the inside pillars to identify where to drill internal holes



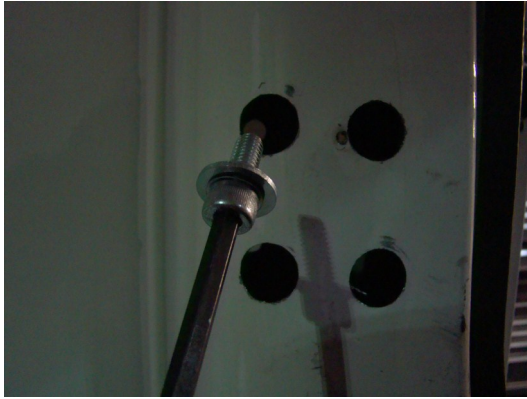
Once holes have been marked open them up to 0.86 inches (22mm)



**The above instructions are designed for trade use only, measurements and specifications are to be used as a guide only, check for new vehicle specification I.E. Body Mouldings ETC. If in doubt contact helpline. Locks should be lubricated regularly, No Liability Is Accepted For Incorrectly Fitted Locks.**

# Ford Transit Moal Side Door Fitting Instructions

Place washers on socket screws, then pass the socket screw through the top left hole and screw into moal lock. Place the bottom left socket screw through and tighten, leaving some play in movement. Then place a sliding nut (raised side facing inwards) through the moal lock and put a socket screw through it. Repeat this for last bolt. Tighten all bolts, this side of the moal lock is now fitted.



**The above instructions are designed for trade use only, measurements and specifications are to be used as a guide only, check for new vehicle specification I.E. Body Mouldings ETC. If in doubt contact helpline. Locks should be lubricated regularly, No Liability Is Accepted For Incorrectly Fitted Locks.**

# Ford Transit Moal Side Door Fitting Instructions

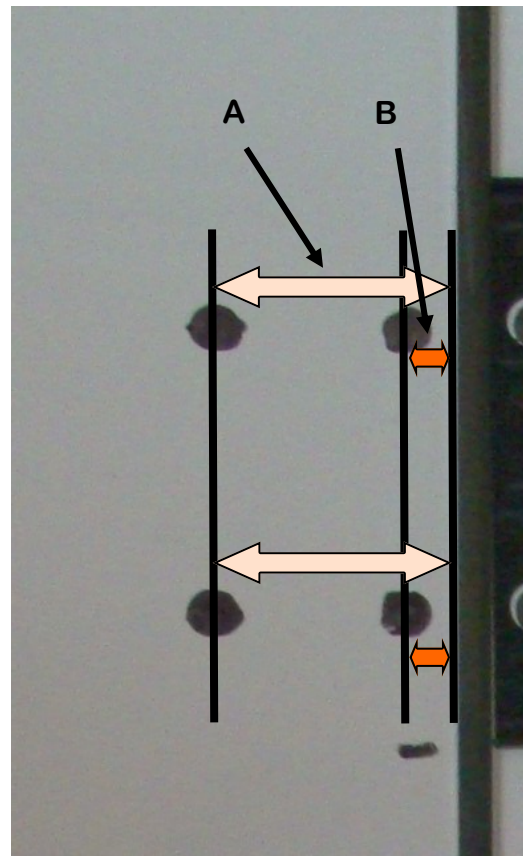
Place the left gasket in line with the fitted lock and draw two circles at either end of the gasket, these are the drill holes. The edge of the gasket should be in line with the door edge.



The outer holes (Arrow A) should be 1.85 inches (47mm) away from the edge of the door.

The inner hole (Arrow B) should be 0.39 inches (10mm) away from the edge of the door.

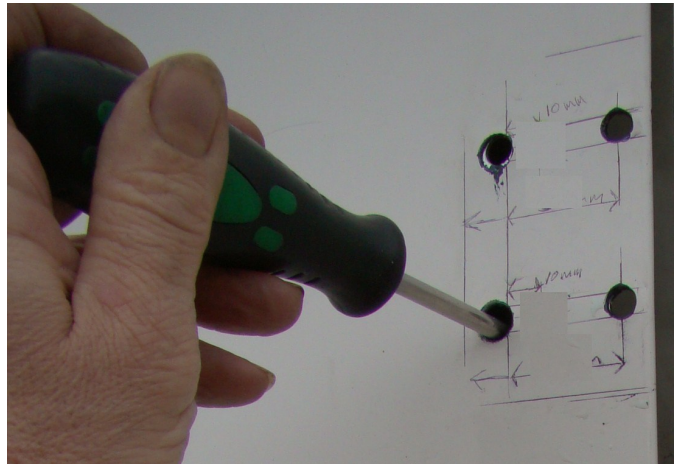
Once checked, drill pilot hole and then the M8 hole.



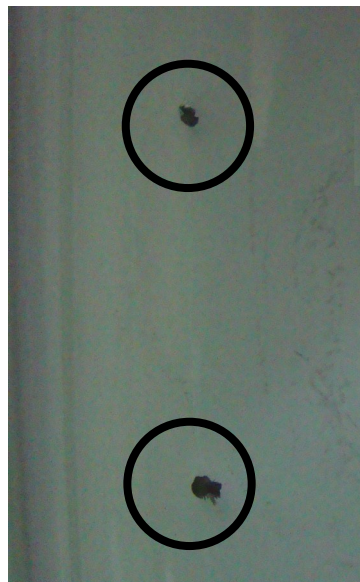
The above instructions are designed for trade use only, measurements and specifications are to be used as a guide only, check for new vehicle specification I.E. Body Mouldings ETC. If in doubt contact helpline. Locks should be lubricated regularly, No Liability Is Accepted For Incorrectly Fitted Locks.

# Ford Transit Moal Side Door Fitting Instructions

Using a punch, pass through the two outer holes on the door to mark the positions on the inside pillar to identify where to drill internal holes.



Once holes have been marked open them up to 0.86 inches (22mm)



**The above instructions are designed for trade use only, measurements and specifications are to be used as a guide only, check for new vehicle specification I.E. Body Mouldings ETC. If in doubt contact helpline. Locks should be lubricated regularly, No Liability Is Accepted For Incorrectly Fitted Locks.**

# Ford Transit Moal Side Door Fitting Instructions

Place two sliding nuts (raised side facing inwards) through the moal lock and then put a mushroom headed bolt through the inner hole in the door. Place the gasket on the moal lock and offer to receive bolt, repeat on lower bolt. Then from inside of the van, pass socket bolt through hole in pillar into machine thread in rear of moal, repeat for second fixing.



**The above instructions are designed for trade use only, measurements and specifications are to be used as a guide only, check for new vehicle specification I.E. Body Mouldings ETC. If in doubt contact helpline. Locks should be lubricated regularly, No Liability Is Accepted For Incorrectly Fitted Locks.**