

NetStation

IP-Based Network Video Surveillance System

NetStation Software is an advanced Video and Sound recording system operating with IP and Analog Cameras. The system is based on the VDR-S application that is used in PC based DVR systems by Alnet Systems. Since the NetStation is based on the VDR-S application and has been operating reliably for nearly 5 years on over 60 000 applications, it has achieved guaranteed stability, reliability and functionality. This achieves the highest level of quality for recording systems.

The NetStation can be a hybrid system which means that from a maximum of 64 cameras, 16 can be used as analog and the rest as 48 IP cameras. Hybrid Solutions, using Analog/IP are extremely useful in situations where there is a need for developing new installations, or adding IP cameras to existing analog CCTV installations. In this case the project managers are able to utilize existing installations which greatly reduce the cost of re-development of projects. For a NetStation Hybrid System, a PC based DVR is used where analog cameras connect to the PC using Capture Boards, and the remaining cameras utilize the local network. Since the NetStation is an open platform "hybrid" system, this means that it is compatible with most IP cameras and IP video servers made by the leading manufacturers.

Scalability of the software allows for the ability to adjust the installation size for specific projects depending on project requirements. Application updates guarantee that the software will always have the latest features and solutions that follow CCTV trends.



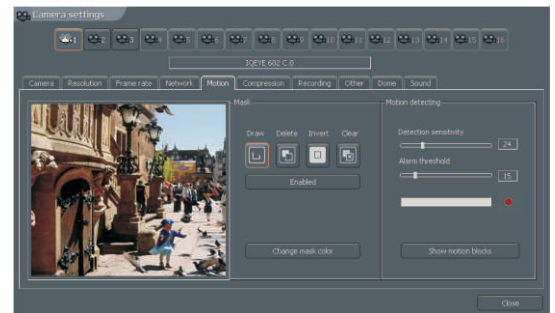
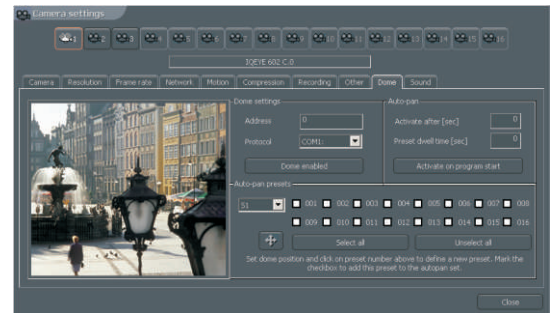
NetStation perfectly suits small to enterprise sized installations, ranging from 4 cameras to several hundred of cameras. The NetStation software is compatible with the newest IP camera solutions utilizing the HDTV standard. Mega-Pixel IP Cameras which provide video at resolutions, several times greater than PAL/NTSC will be a common industry standard in all future installations. The use of Mega-Pixel cameras will change the quality and reliability of CCTV systems.

The Advanced Client Software named VDR-C allows for an unlimited amount of remote connections to access live video streams, recorded video, and many other functions from one location. There are also clients available for Mobile Devices. The application is considered one of the most advanced and expanded application for monitoring CCTV systems. The application can be used on devices equipped with SymbianOS and Windows Mobile Operating Systems.

www.alnetsystems.com
European Quality

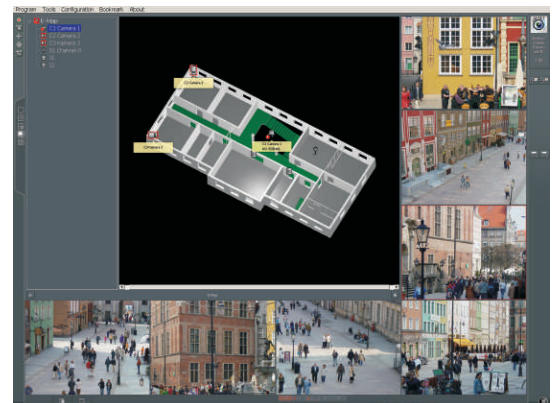


The Archive menu in the NetStation system is highly advanced and simultaneously very simple to operate, while reviewing and managing archived video. Recording for each camera channel in the archives creates its own timeline, which clearly shows all the events that occurred to initiate recording. This creates an easy and functional way to localize and view events that occurred. The recordings are shown the same way, using a timeline in the archives. In the archives, as the operator rolls over the timeline, a new preview window is displayed, where fast playback either forward or backward can be initiated. The speed of the playback using the roll over function depends on the speed that the mouse is moved at across the timeline. The Archive Control Panel speed settings provides for functions such as forward/reverse playback with three speed selections, normal, 2x and 4x. Searching for specific motion areas is an advanced feature, which allows for better analyzing of specific areas of recorded video. All events that are found can be marked with bookmarks, for later review, and easy access. Bookmarks can be placed manually in the archives, they can be user initiated, or can be done automatically upon Input Activation.

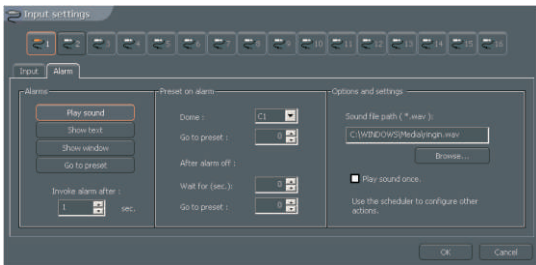


The Camera Configuration menu allows for the precise configuration of all camera parameters on all individual cameras. Multilevel menus allow for easy to understand tools that are available for each camera. Motion detection is one of the tools available in the camera configuration, where sensitivity and object masking are essential for each camera, especially for areas with constant motion.

A specialized photo album stores screenshots of cameras where they can be watermarked, and printed with ease from specific events. The intuitive backup function allows for fast and trouble free ways to backup your archived data to any device e.g. DVD, CD, or network storage. Also options such as backing up to video files e.g. AVI, this way they can be played back on most PC's without additional software having to be installed.

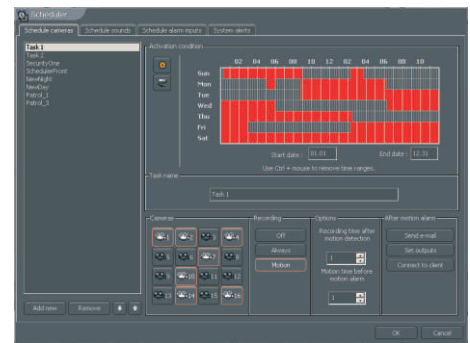
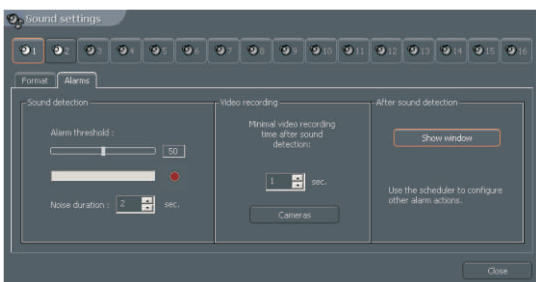
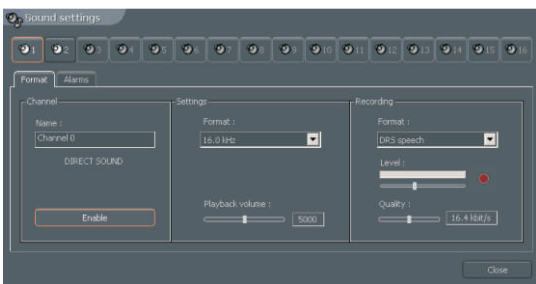


The control of Digital Inputs and Outputs is a seamless process, as a number of programmed events can be programmed to be invoked based on specific inputs. Functions as moving a PTZ camera to a preset, start recording and controlling outputs, can be invoked using a simple input such as a motion sensor, doorbell or any other input.



NetStation allows for the connection of up to 64 PTZ cameras. Controlling of the P/T/Z functions, can either be done manually using the keyboard, joystick, mouse or the on screen control panel. Wide range of supported domes made by several manufacturers, provide great compatibility. Preset Control is an option that can be set manually on PTZ cameras, so specific cameras can monitor larger areas.

Extended sound channel control is a strong feature of the NetStation software. It is possible to record up to 64 audio channels from IP cameras. Recorded sound can easily be browsed in the archives alongside with video recordings. Recording based upon sound detection is extremely useful as it allows to record whole events even when motion is not necessarily detected. Tools for sound detection allow the precise tuning of all parameters available for sound e.g. quality and volume.



To make any CCTV system function correctly, a precise system of predefined times and actions is required. Included in the NetStation software is a very advanced scheduler with a multitude of options available to control all functions. All camera recorded events, sound events, system alerts and even inputs and outputs can be specified to do specific options such as turn on recording, send output, connect to client, and emailing notifications. The connecting to remote client function is especially useful as no one is able to constantly monitor a CCTV System, and this would automatically show someone what action is happening and where. The scheduler is based on a 24/7 system where any time frame can be specified to run on set times and events.



Remote access to the server is based on the VDR-C application which works under Microsoft Windows XP/Vista operating system. With its expanded functionality and many options, it is very similar to the VDRS/NetStation software.

Features that can be controlled from the client application include but are not limited to: viewing and backing up archived recordings, live view and client side recording.

The client side recording can be stored off location, for a redundant backup of the video streams, that way a complete system failure can be prevented. The VDR-C application can be used as a Central Monitoring Station (CMS) with multi-monitor support. This way a large installation can be monitored from one location.

In addition to the PC based VDR-C, an equally powerful and functional client is available for Mobile Devices. Mobile devices equipped with Windows Mobile or SymbianOS are supported for the use with VDR-C Mobile application. Functions that can be utilized from the VDR-C Mobile are: Live View, Archive View, P/T/Z control, and Digital Inputs and Outputs.

Frame grabber boards for analog cameras support

AS 4000



Video inputs 16
Audio inputs 16*
400/480 fps @ CIF
Software compression
RealTimeDisplay
Up to 2 boards

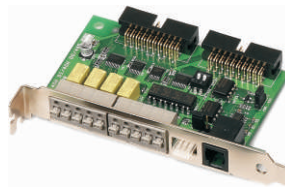
* - with expansion module

DSP 8000



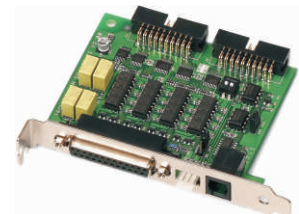
Video inputs 8
Audio inputs 8
200/240 fps @ D1
Hardware compression
Up to 4 boards

ConExt 0404



4 CH DI / 4 CH DO
PTZ Converter

ConExt 1604



16 CH DI / 4 CH DO
PTZ Converter

Available NetStation versions:

NetStation X - number of video channels (4, 8, 12, 16, 17, 18, 19, 20, 21 60, 61, 62, 63, 64)



www.alnetsystems.com
European Quality